

Lane County Oregon



INTRODUCTION TO AIRMAIL AND THE WINLINK 2000 SYSTEM



Introductions

Mark Perrin

Emergency Coordinator, Lane County ARES

n7mq@arrl.org

Max Manghelli

kd7ges@yahoo.com

Thomas Germaine

kd7cut@comcast.net

Introductions Around the Room

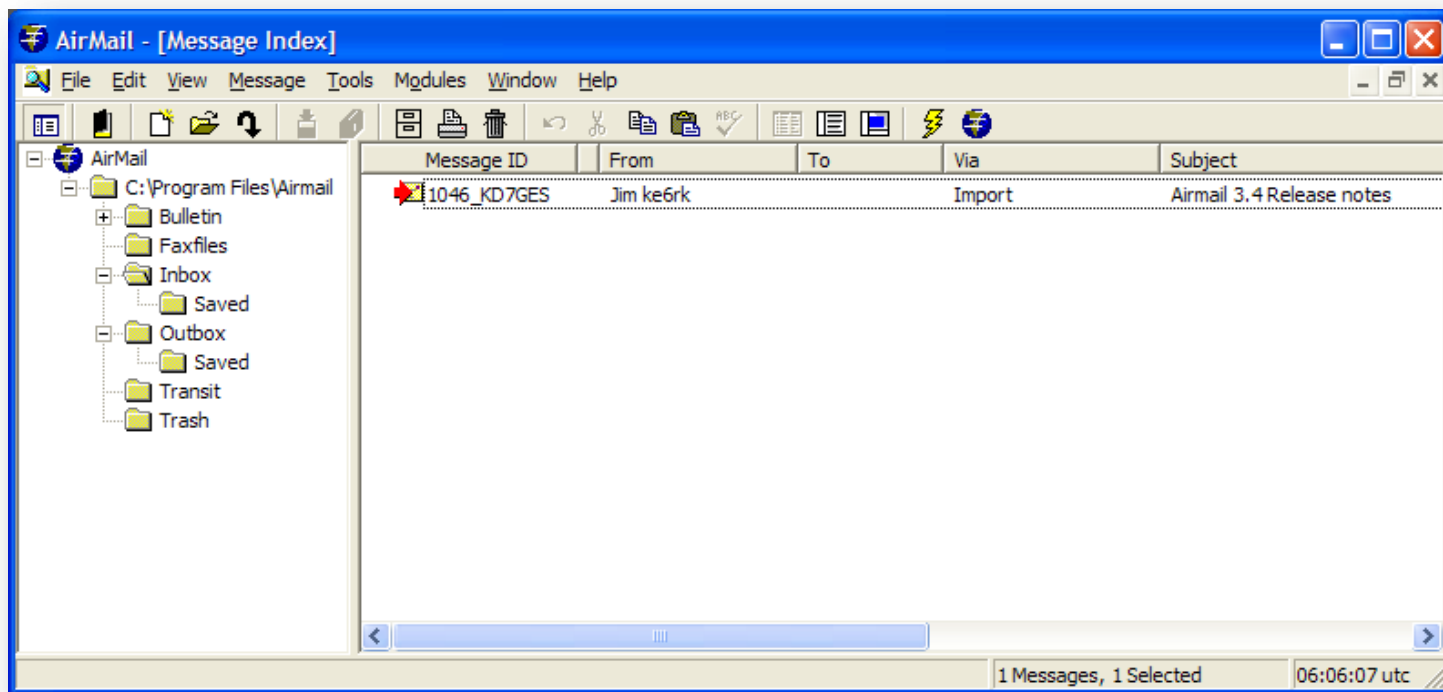


- Intro to Airmail and Winlink System
- Airmail Installation
- Airmail Configuration
 - Station Configuration
 - VHF Packet Client Configuration
 - Telnet Client Configuration
 - Address Book Setup – ICS213, DOE, SITREP
- Sending Messages
 - Creating a Message
 - via Winlink CMS Server (Telnet)
 - via Winlink RMS Station
 - via Direct Connection (station to station)
- Practice Sessions



What is Airmail?

Airmail is the primary client application used by Oregon ARES/RACES stations for connections to the Winlink-2000 system. A messaging program (similar to Outlook) specifically designed for connection to a VHF/HF radio mailbox station. Airmail can transfer messages automatically with any station supporting the Winlink-2000 protocol and other Airmail stations. Airmail was developed specifically for sending messages via radio and optimized for low-speed links, not an adaptation of an ordinary email.



What is the Winlink 2000 System?

Winlink 2000 is a worldwide radio messaging system that takes advantage of the Internet where possible. The WL2K system stays well-oiled by handling many thousands of casual and health-and-welfare messages from users at sea and far-away places through our public stations. Behind the scenes, there are additional stations--EmComm stations--that exist to be ready when an emergency event occurs. These stations provide the WL2K system with additional capacity and redundancy to ensure e-mail resources remain available when a communications emergency shuts down or limits the capacity of normal wireless and wireline systems.

The WL2K network topology allows us to serve agencies with e-mail, across the country or around the world, from inside a disaster area, and without the Internet or wireless or wireline networks.



Why use Airmail and the Winlink 2000 system?

- ❖ Statewide adoption
- ❖ Flexibility
- ❖ Familiar (Email Style)
- ❖ File Attachments
- ❖ Internet Connectivity
- ❖ Peer to Peer VHF/HF



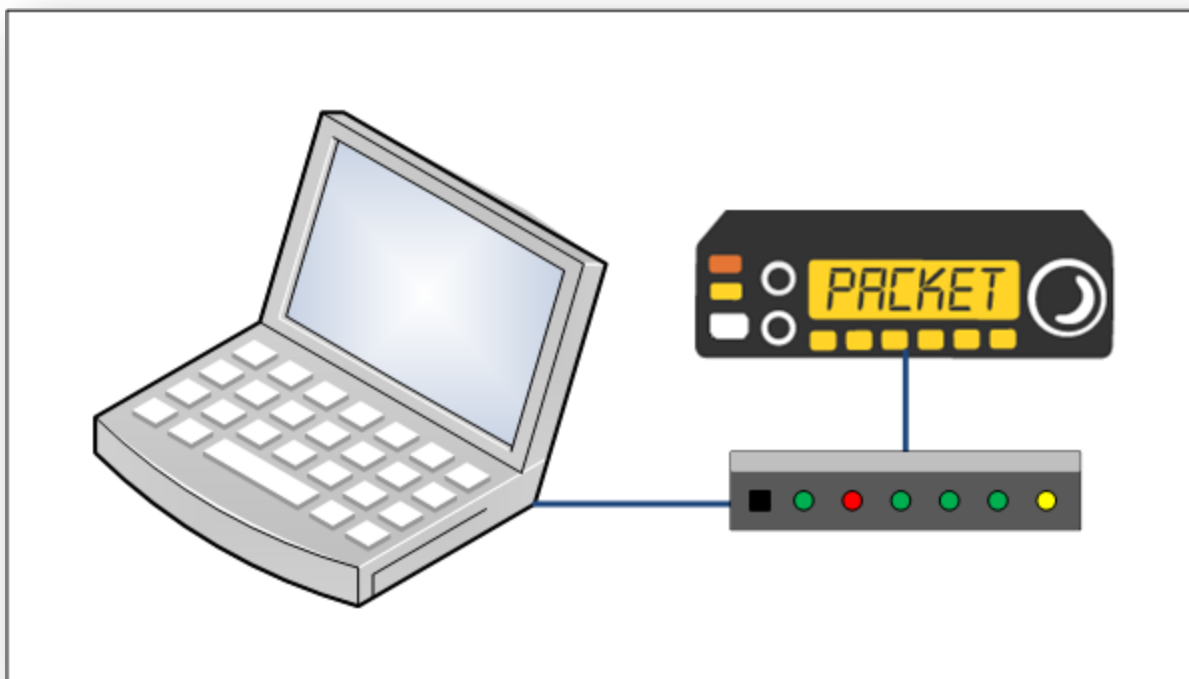
Elements of a VHF Packet Station

The standard VHF packet station consists of 3 primary components.

◆ Computer

◆ TNC

◆ VHF Radio



AirMail 3.4 client

version 3.4.034

©1997-2008 Jim Corenman
& Sirius Cybernetics LLC
Unlicensed use prohibited,
see Help file for details

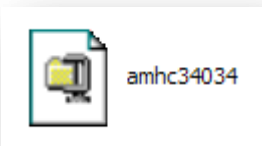


AIRMAIL INSTALLATION



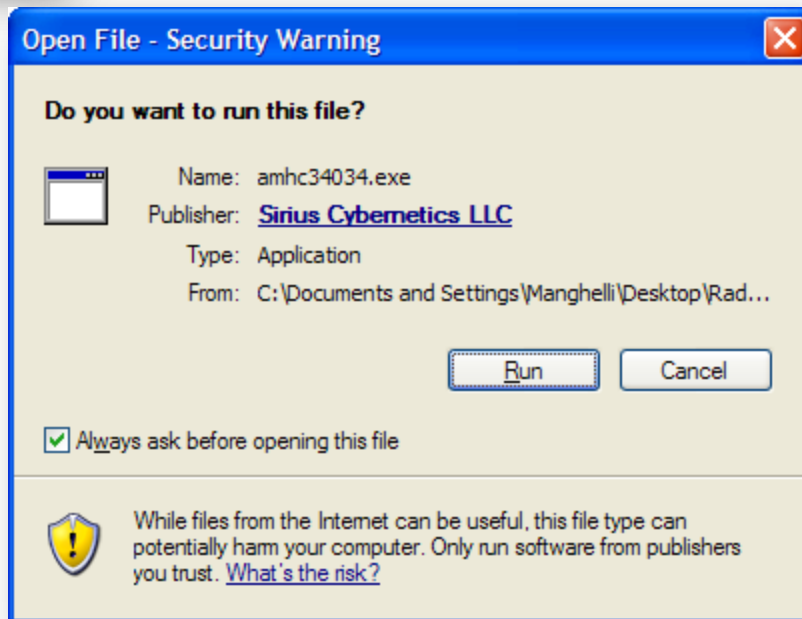
Launch the Airmail 3.4 Installation

STEP
1



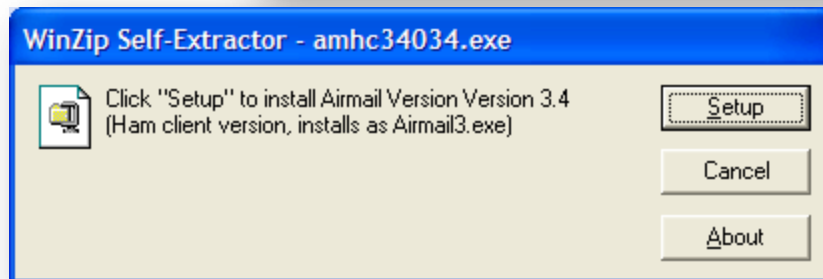
Launch the Airmail 3.4 Installer on the CD from Software > Airmail > (Windows Version) > amhc34034.exe

STEP
2



Click **Run** if presented with a Security Warning window.

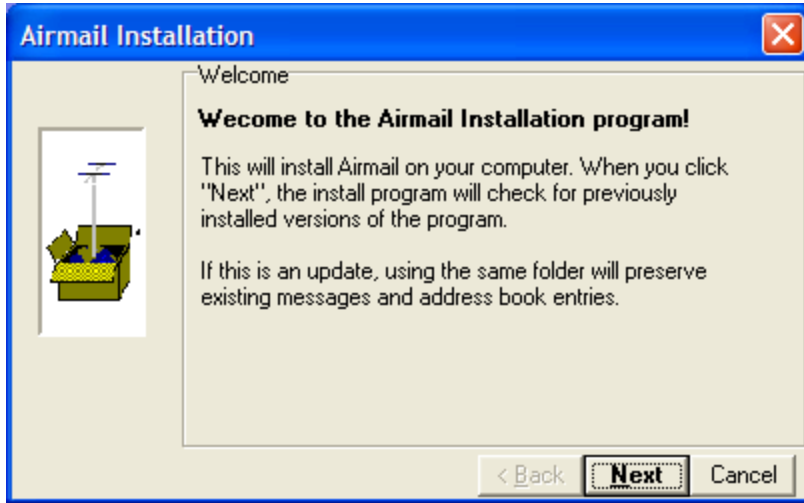
STEP
3



Click **Setup** to start the Installation Wizard.



Airmail 3.4 Installation

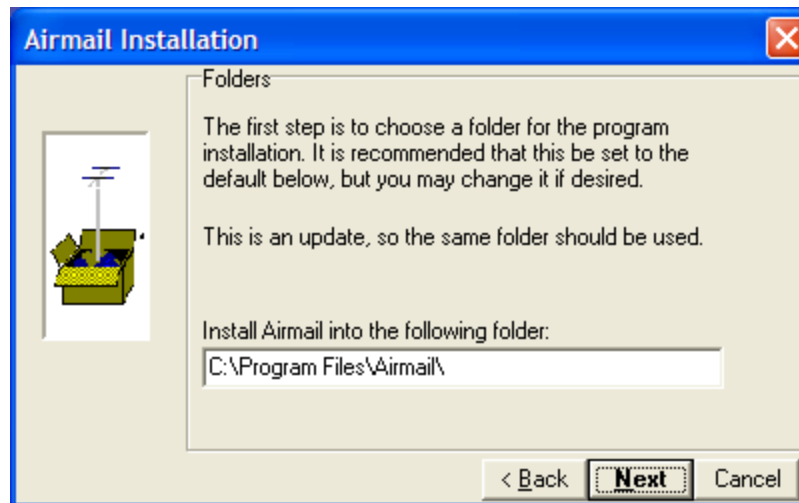


STEP
4

Click **Next** to advance the Airmail Installation.

STEP
5

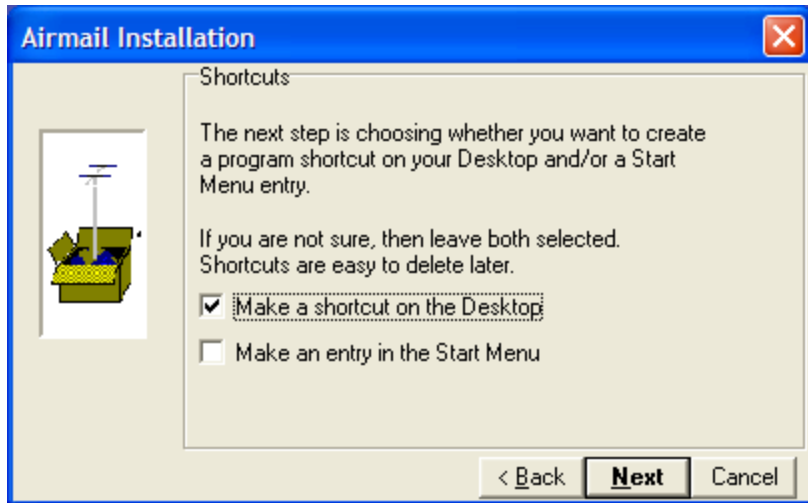
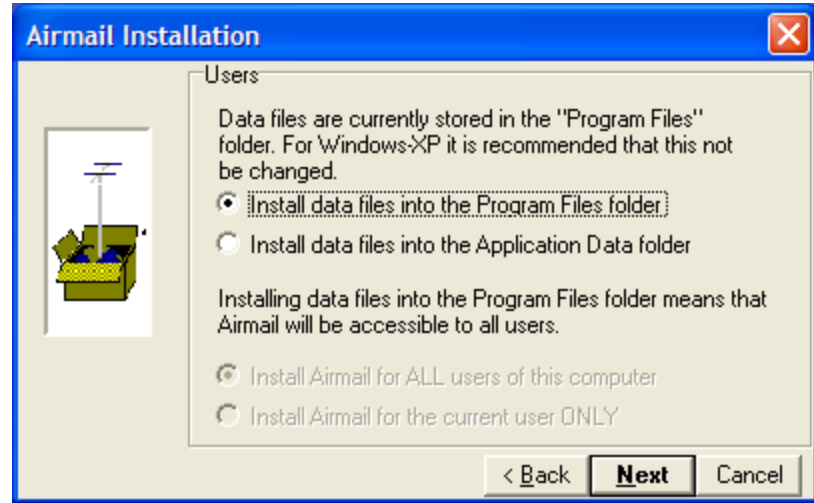
Click **Next** to keep the default installation path.



Airmail 3.4 Installation

STEP 6

Click **Next** to keep the default data file location for your operating system.

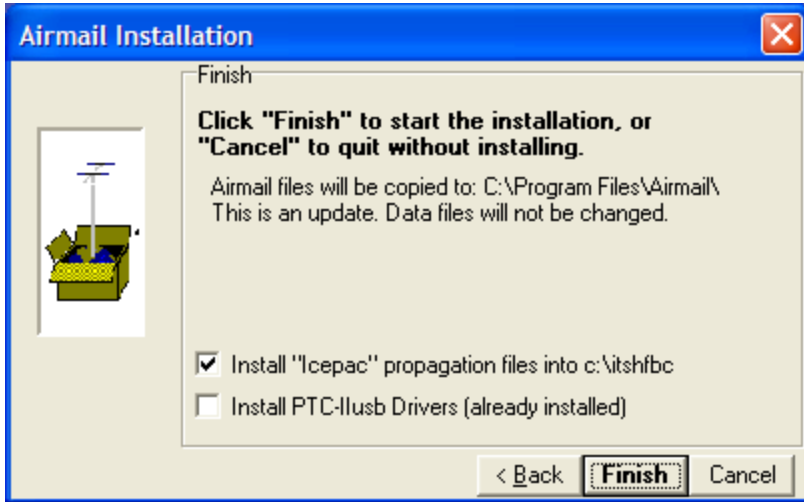


STEP 7

Select both the Desktop and Start Menu options and click **Next**.



Airmail 3.4 Installation

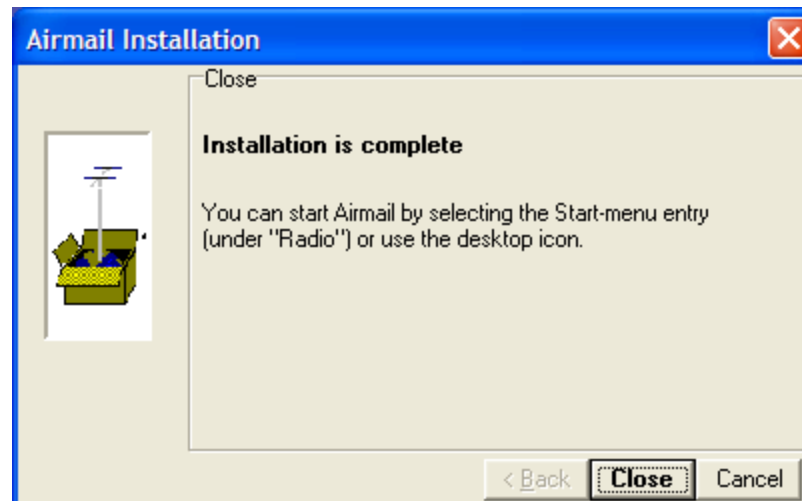


STEP
8

Click **Finish** to start the Airmail Installation.

STEP
9

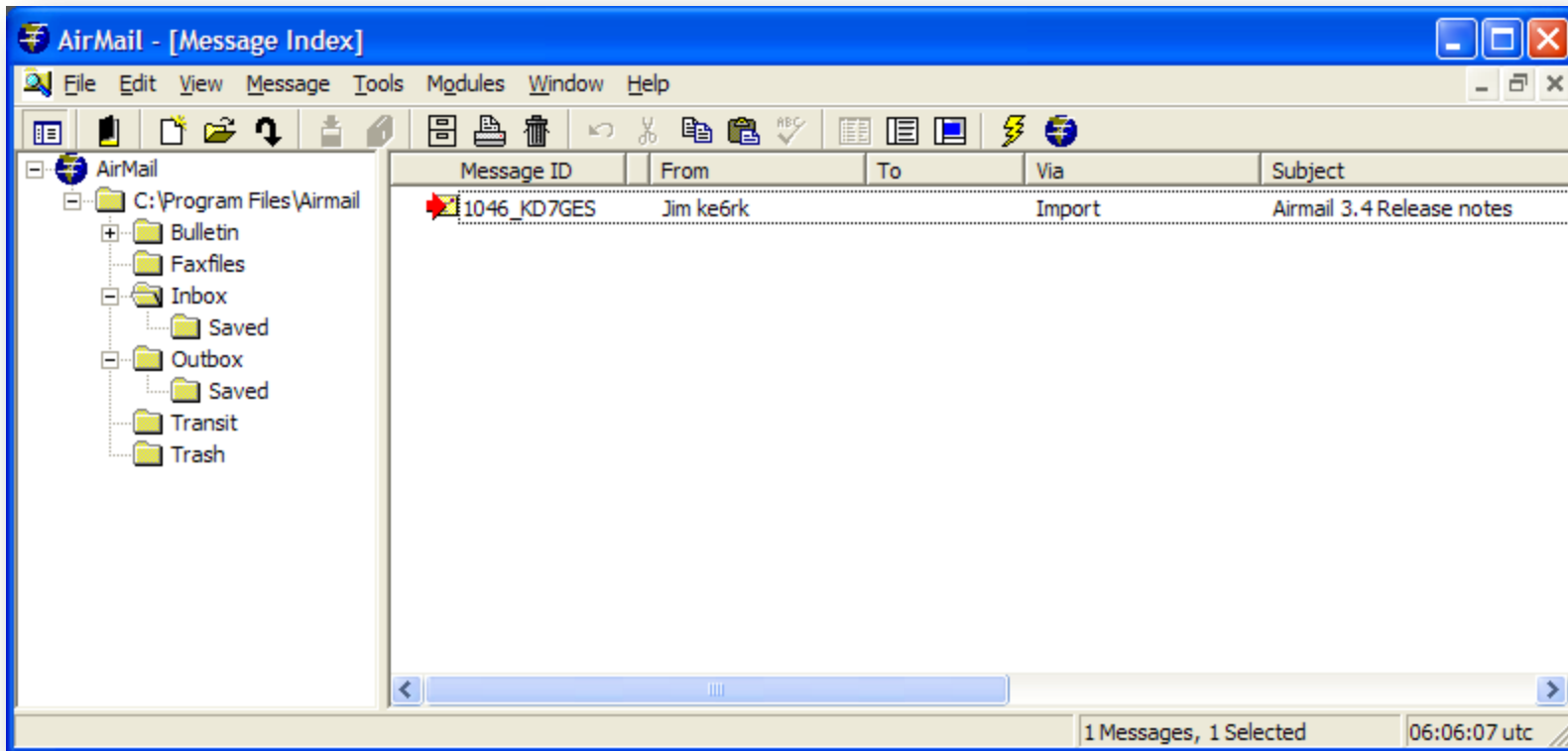
Click **Close** to finish the Installation.

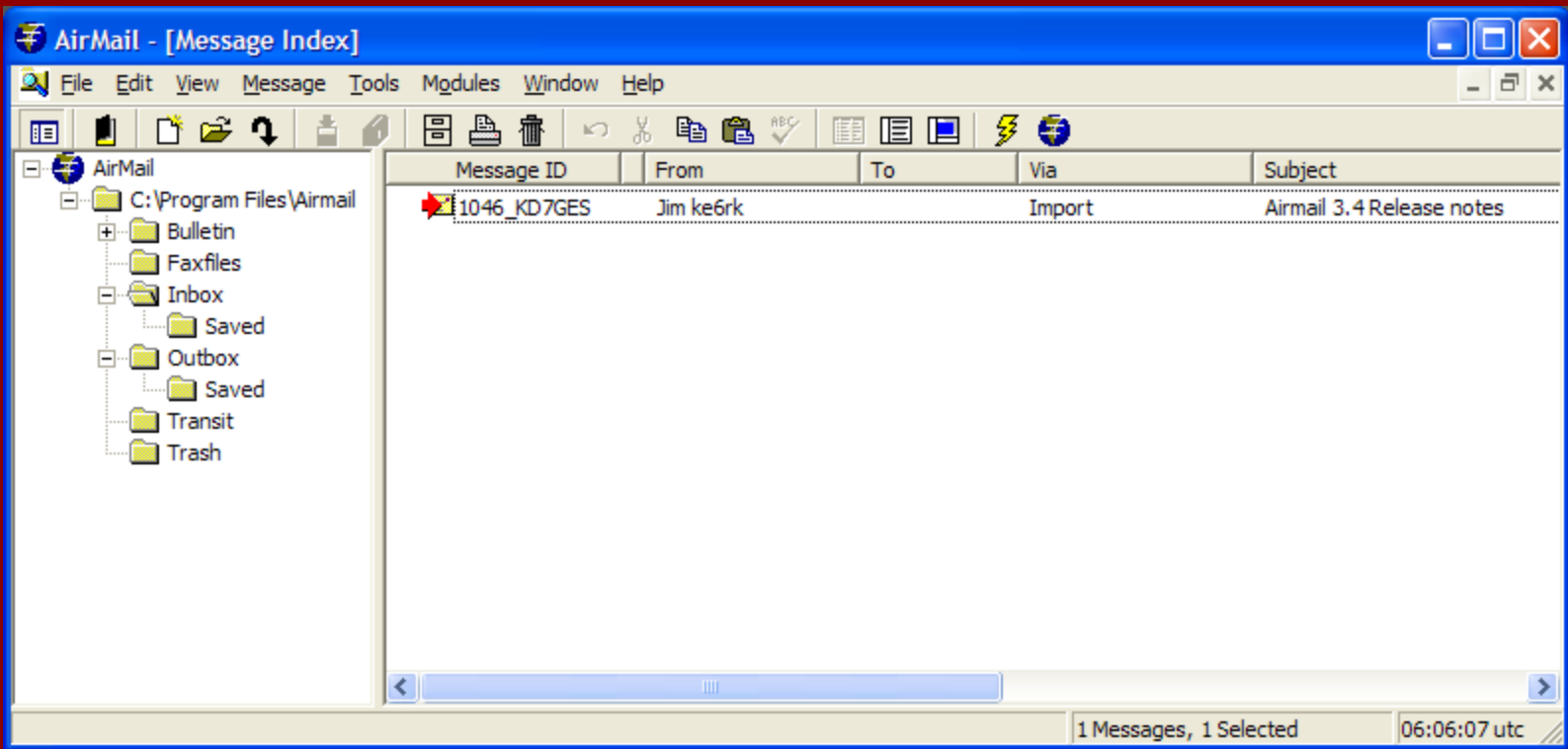


Airmail 3.4 Installation Completed



You can launch Airmail from the Desktop Shortcut or from the Start Menu under **All Programs > Radio > Airmail3**





AIRMAIL CONFIGURATION



Open the Airmail Options from the Toolbar **Tools > Options..**
Choose the **Settings Tab**

Insert your
Callsign

AirMail Options

Connection Settings Folders AutoAnswer Routing Fonts Modules Spelling

System Settings

HAM

Callsign: KD7GES

ID String:

Radio Password:

Hide Passwords

Radio Forwarding

Receive before sending

Forwarding Protocol

FBB Binary Level-2 ("B2F")

Advanced Settings

Station Location

Lat: 44°11.15'N Lon: 123°17.07'

Grid: CN84ie

Send location when connecting

Message Numbering

Current message number: 1049

Show Hints

Apply Cancel OK

Insert your Station
Location if known.



AutoAnswer Tab

Enable
Accept
Incoming
Connects

AirMail Options

Connection | Settings | Folders | **AutoAnswer** | Routing | Fonts | Modules | Spelling

Accept Incoming Connects

Welcome Text:
Welcome to KD7GES's AirMail box,
Please type H for Help

Home BBS:
(the full H-Address of your forwarding MBO)

Zip Code (opt.):

R: Stamp ID: [AirMail 3.4.034]

R:Stamp all INCOMING messages

R:Stamp all OUTGOING messages

Restrictions

Accept connections ONLY from these stations (leave blank to accept all)

Exclude any connection by these stations

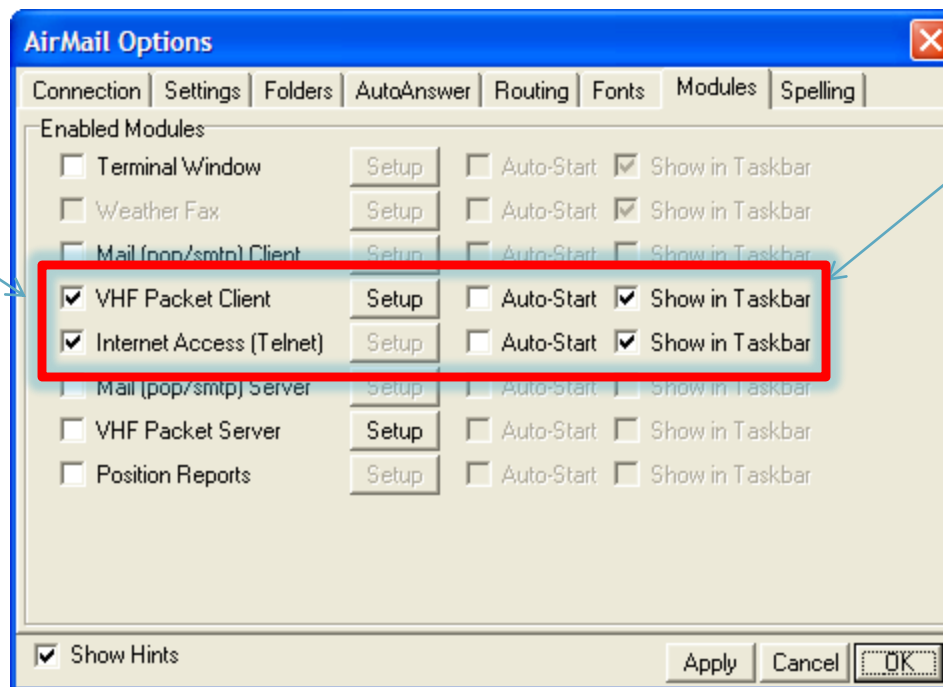
Show Hints

Apply Cancel OK



Modules Tab

Enable VHF
Packet Client

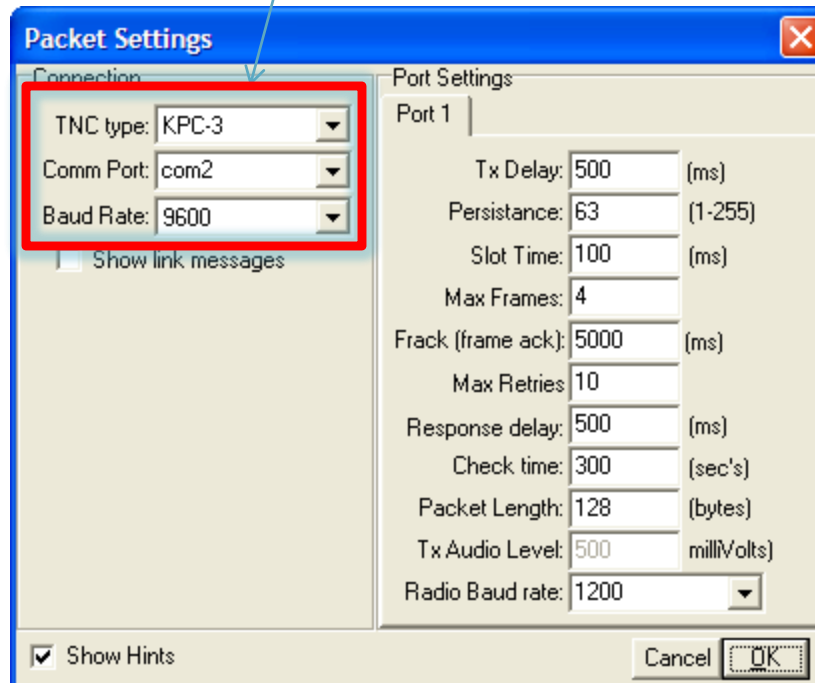


Set both modules
to Show in Taskbar



Packet Module Settings

Choose your TNC, Comm Port, and Serial Baud Rate



Packet Settings

Connection

TNC type: KPC-3

Comm Port: com2

Baud Rate: 9600

Show link messages

Show Hints

Port Settings

Port 1

Tx Delay: 500 (ms)

Persistence: 63 (1-255)

Slot Time: 100 (ms)

Max Frames: 4

Frack (frame ack): 5000 (ms)

Max Retries: 10

Response delay: 500 (ms)

Check time: 300 (sec's)

Packet Length: 128 (bytes)

Tx Audio Level: 500 millVolts

Radio Baud rate: 1200

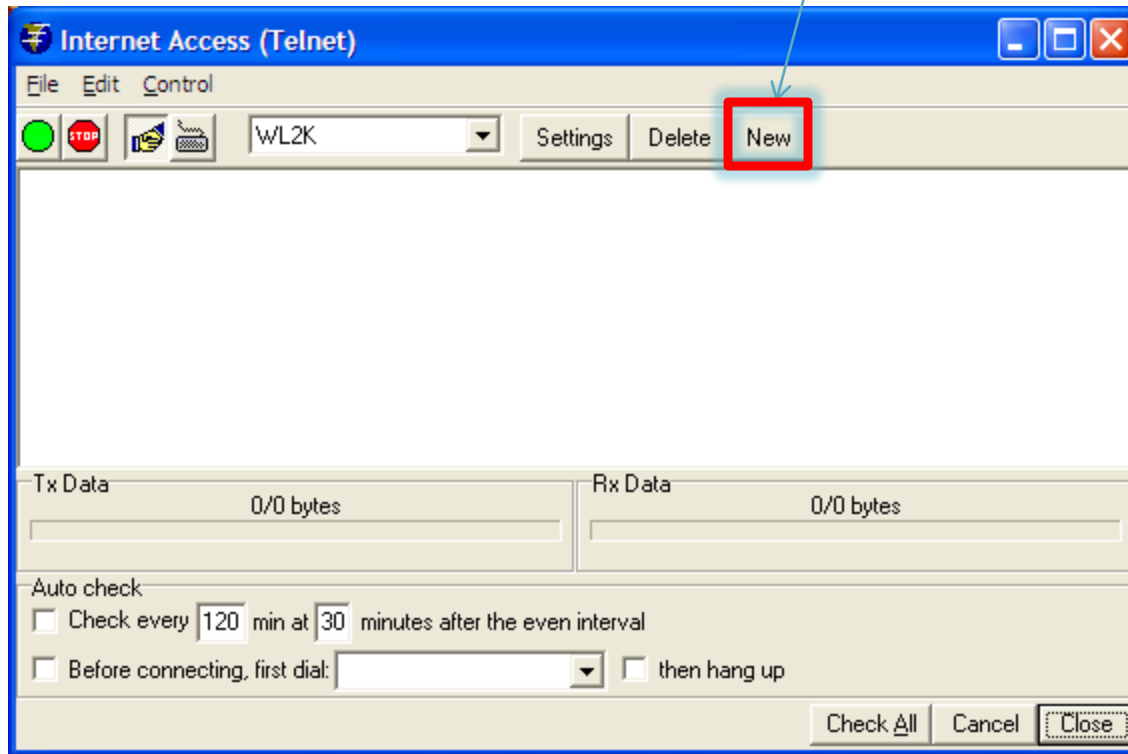
Cancel OK



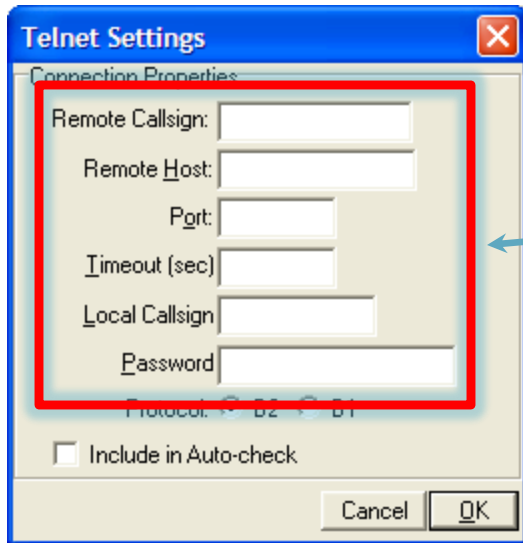
Telnet Client Setup

Open the Telnet Client by clicking the **Lightning** bolt button on the Airmail toolbar.

Click on the New button to create a CMS (telnet) entry.



Telnet Client Setup



Create a CMS source.

Remote Callsign: **WL2K**

Remote Host: **server.winlink.org**

Port: **8772**

Timeout: **120**

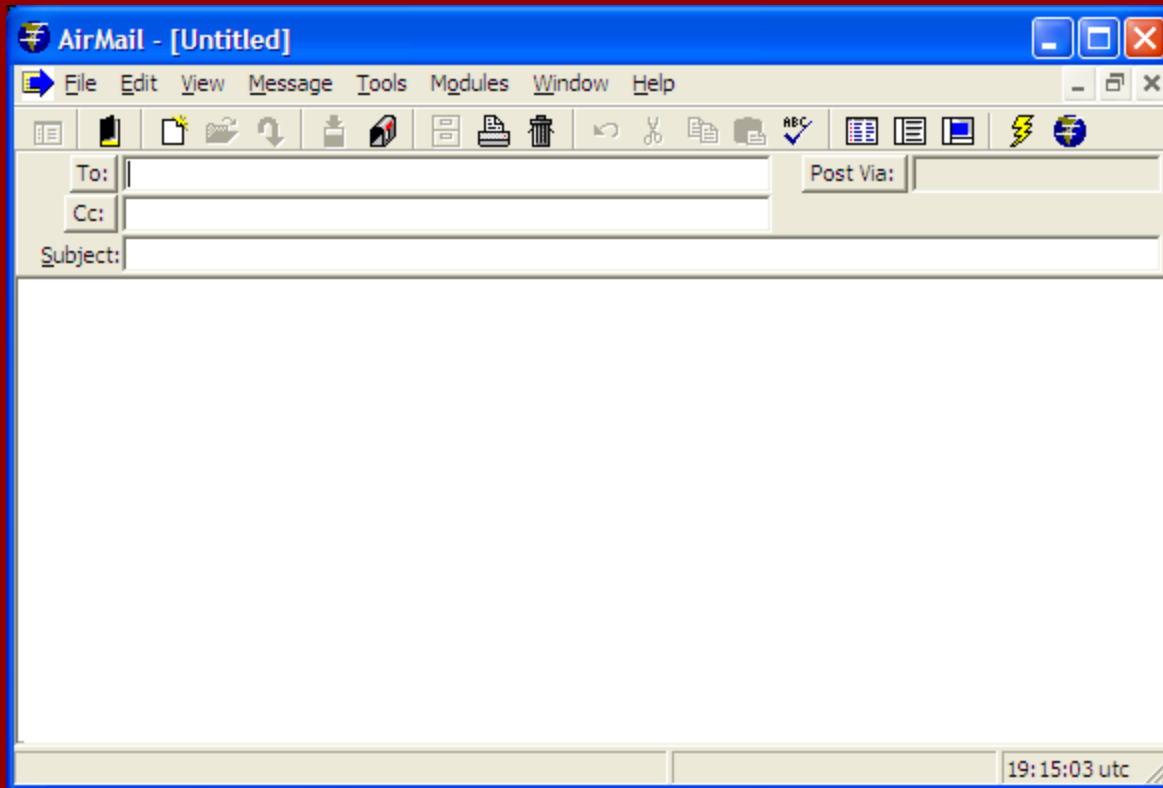
Password: **cmstelnet**



Address Book Setup

DEMO





SENDING AND RECEIVING MESSAGES



Creating a Message

To:

Recipient of Message, either
Callsign or Email Address

Cc:

Copy of Message to either
Callsign or Email.

Post Via:

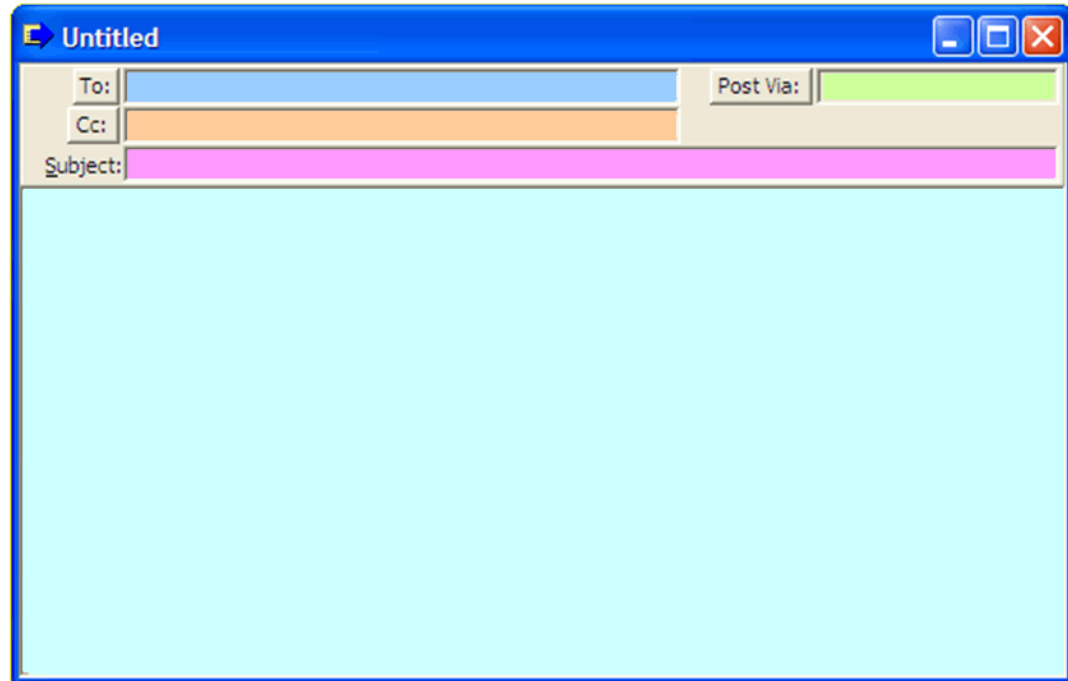
How to Send the Message, via
WL2K, Ham, or Callsign.

Subject:

Subject of Message

Body:

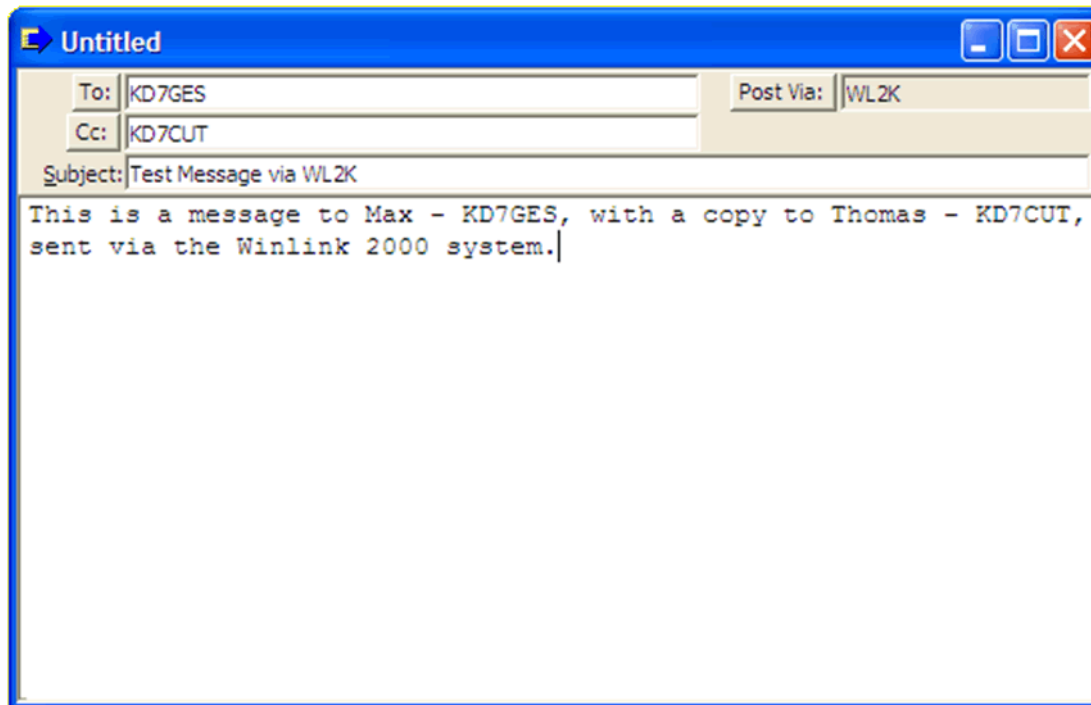
Message Contents



The image shows a screenshot of a software window titled "Untitled" with a blue title bar and standard window controls (minimize, maximize, close). The window contains a form for creating a message. The form has a light beige header area with three input fields: "To:" (light blue), "Cc:" (light orange), and "Subject:" (light pink). To the right of these fields is a "Post Via:" field with a light green background. Below the header is a large, empty light blue area for the message body.



Example Message



The screenshot shows a window titled "Untitled" with a blue title bar. The window contains a form for sending a message. The "To:" field is filled with "KD7GES", the "Cc:" field with "KD7CUT", and the "Subject:" field with "Test Message via WL2K". The "Post Via:" field is set to "WL2K". The message body contains the text: "This is a message to Max - KD7GES, with a copy to Thomas - KD7CUT, sent via the Winlink 2000 system." The window has standard Windows window controls (minimize, maximize, close) in the top right corner.

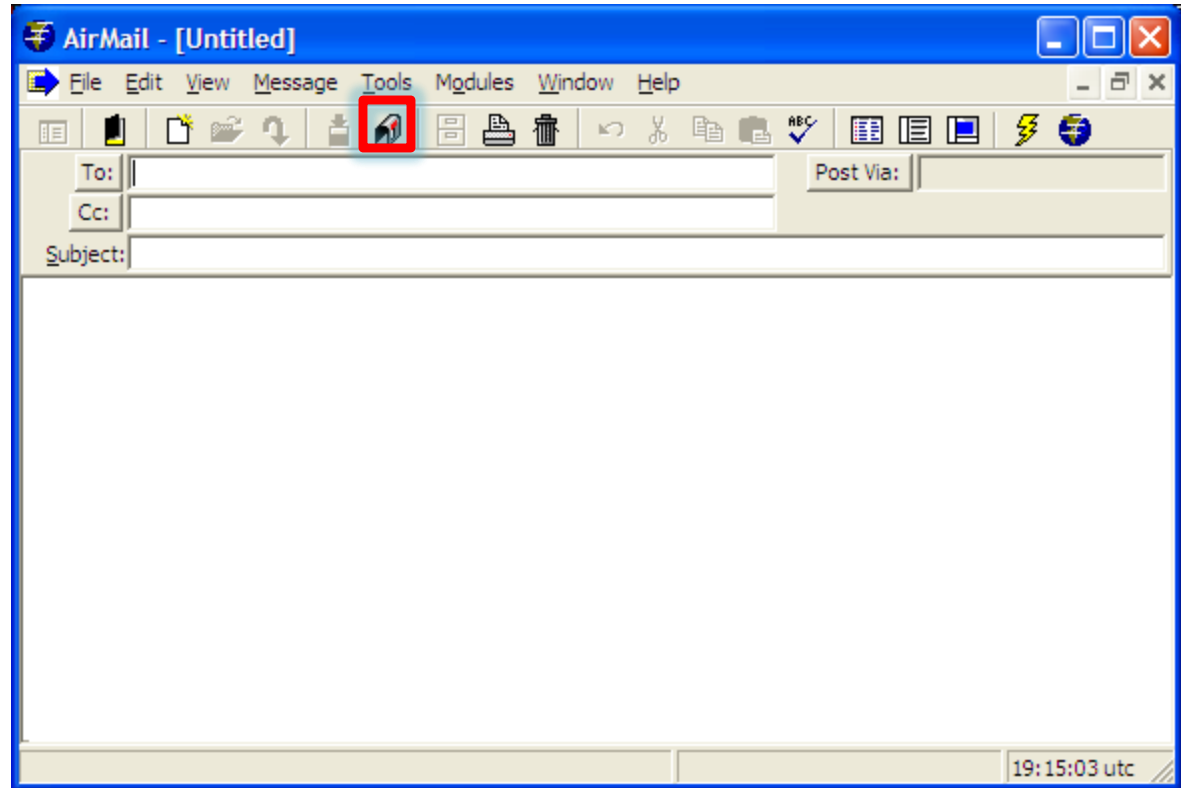
To:	KD7GES	Post Via:	WL2K
Cc:	KD7CUT		
Subject:	Test Message via WL2K		

This is a message to Max - KD7GES, with a copy to Thomas - KD7CUT, sent via the Winlink 2000 system.



Post Message for Sending

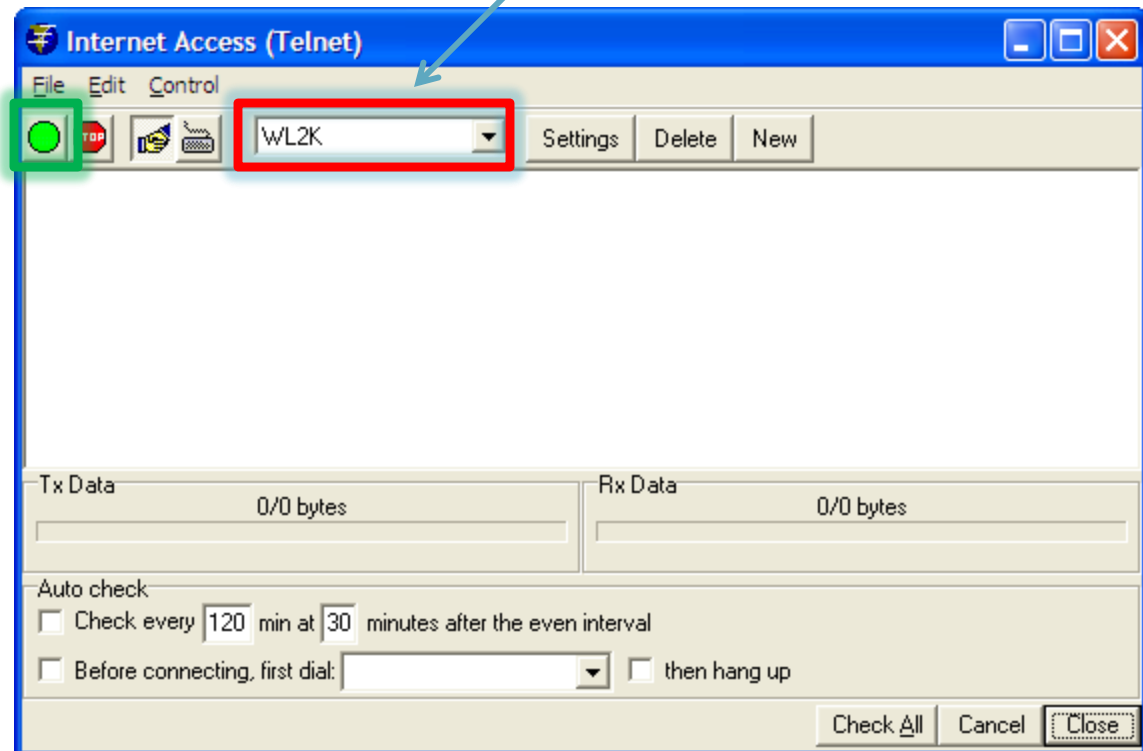
When your message is complete, **POST** it to the Outbox by clicking the Mail Box icon.



Sending and Receiving via a CMS Server (Telnet Client)

With an active internet connection, click the **Green Go** button to start a connection to a CMS server.

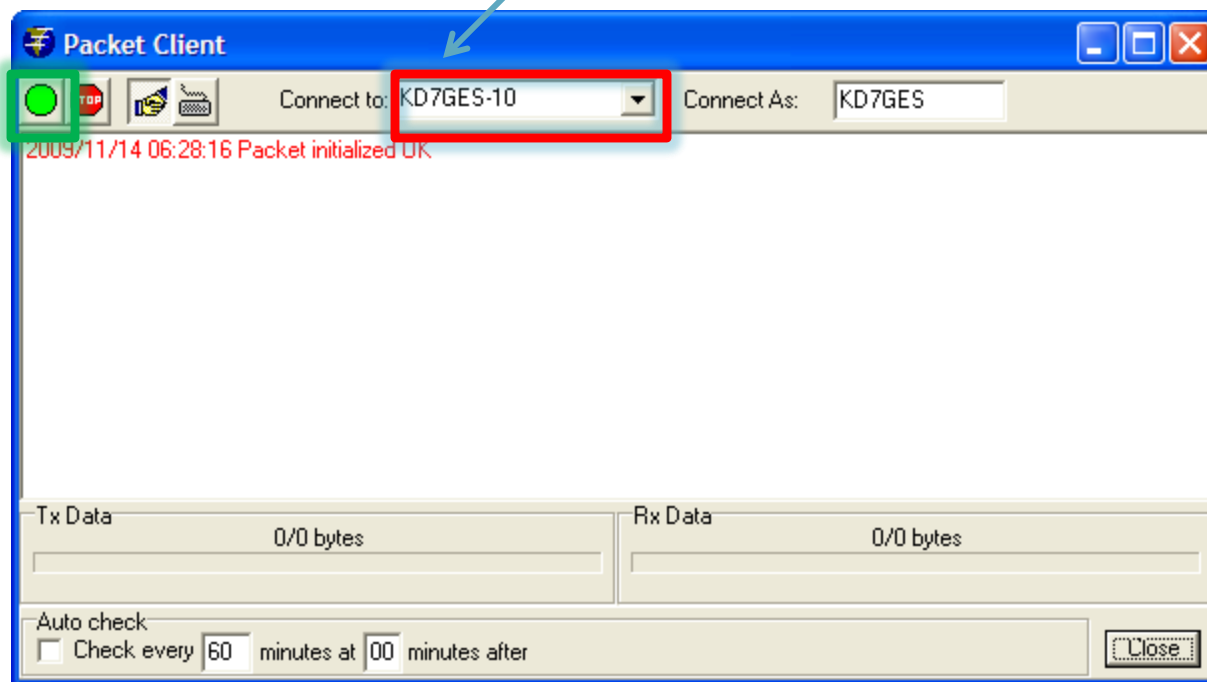
Choose a CMS server or **WL2K** for Auto Selection.



Sending and Receiving via a RMS Station (Packet Client)

When ready to connect, click the **Green Go** button to start a connection to the RMS station.

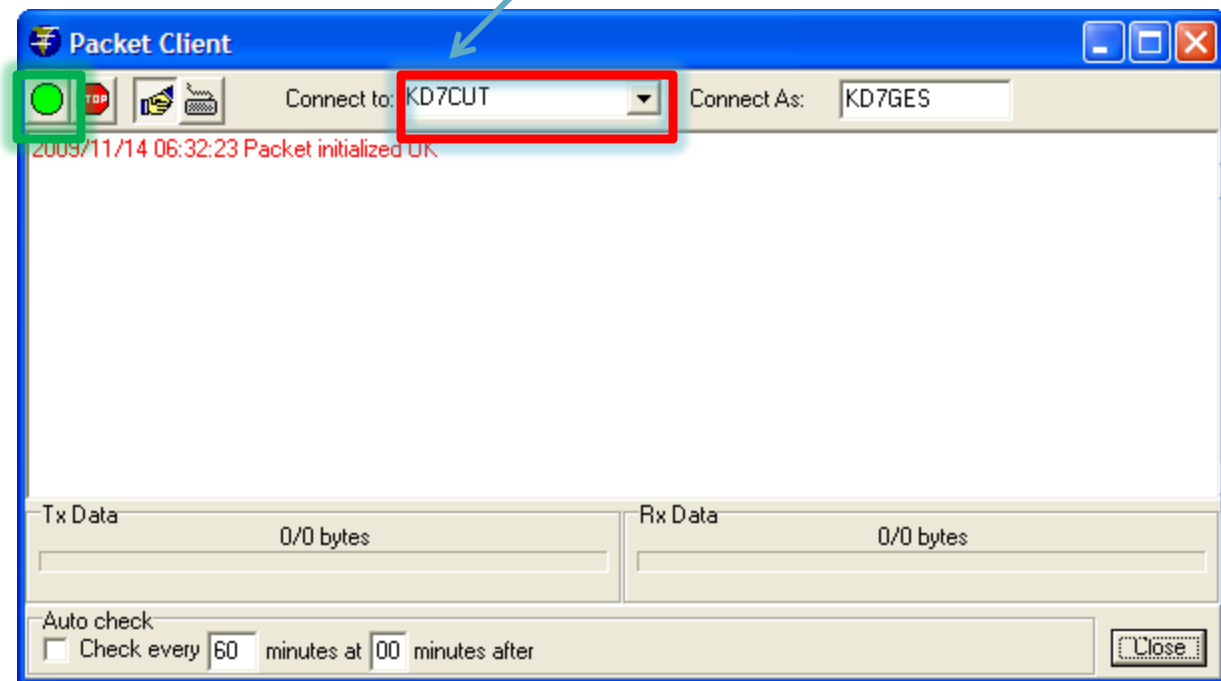
Enter the Callsign or path (Callsign, node) to a RMS station such as KD7GES-10, or W7EUG-10



Sending and Receiving via a Direct Connection (Packet Client)

When ready to connect, click the **Green Go** button to start the connection.

Enter the Callsign or path
(Callsign, node)



HANDS ON PRACTICE

